

# HESHENG<sup>®</sup> MOTO SPORT



## HESHENG<sup>®</sup> MOTO SPORT

金华禾盛金属制品有限公司  
JINHUA HESHENG METAL PRODUCT CO.,LTD.

Add:lingxiazhu industrial zone,jinhua city,zhejiang,china  
Tel: 0086-579-87403689 Fax:0086-579-87403458  
www.heshengchina.cn www.jhhesheng.com  
E-mail:sale@jhhesheng.com

*China Leading Manufacturer  
of motor sport products*



More Than **15** Years

## Factory Brief Introduction:

- 1.Established:2000
- 2.Product Series:
  - Motorcycle Stand
  - Motorcycle Ramp
  - Lift Stand
  - Racing Bike Parts
- 3.Staff: 100 Persons.
- 4.Engineer: 5Persons.
5. Factory Area:8,000m2
6. Product Capacity:20,000sets/Year
- 7.Quality System: ISO9001

Available in Silver Anodized and (7) Powder Coat Colors: Matte Black, Blue, Red, Green, Yellow, Orange and White

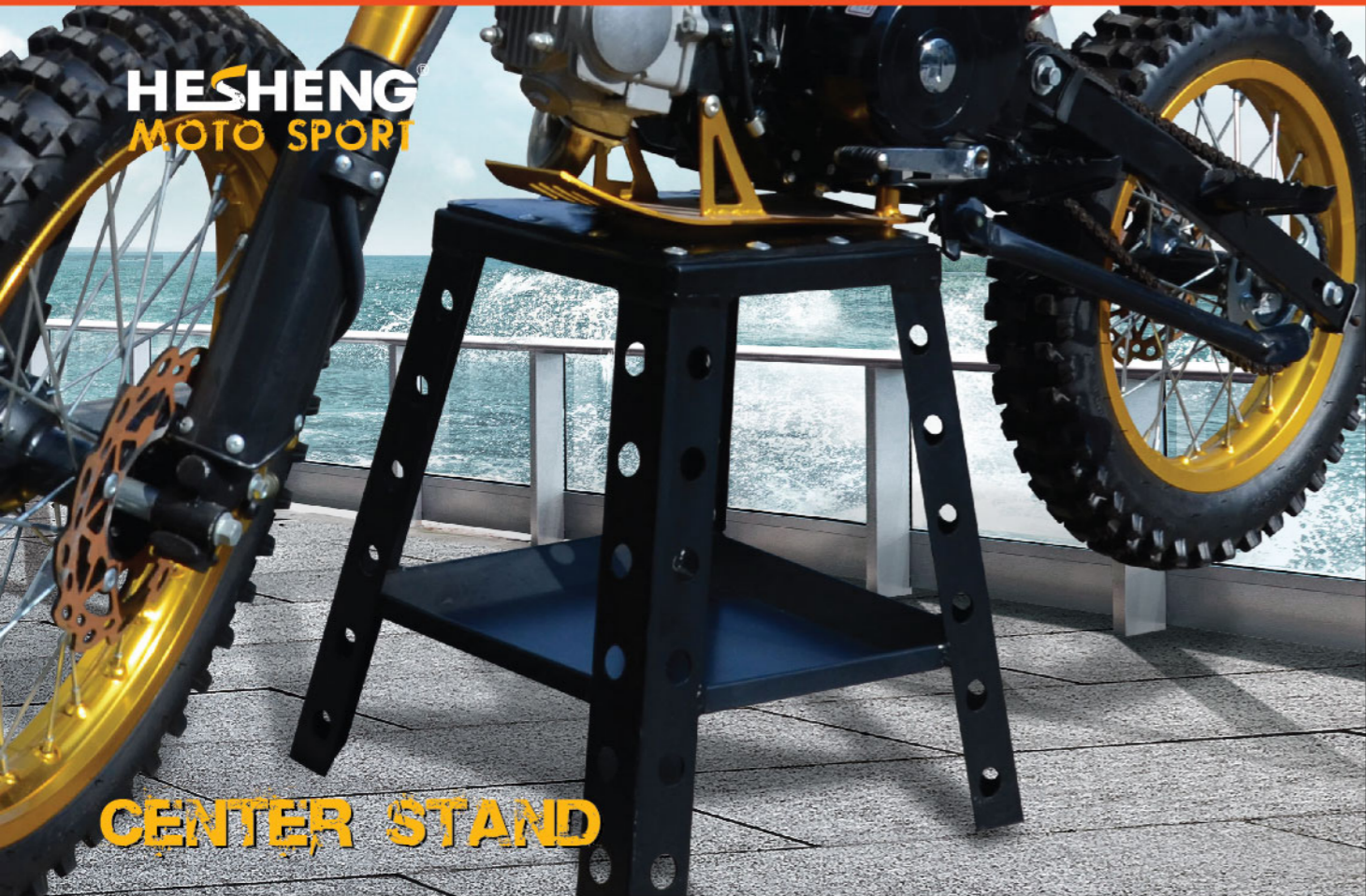


# CATALOGUE

Center Stand	01-05
Rear&Front Stand	06-07
Wheel Chock	08-09
ATV Stand	10
Lift Stand	11-12
Ramp	13
Tire Changer&Balancer	14
Tool Box	15
Garage Accessory	16

## WORKSHOP & PRODUCTION FACILITY





**CENTER STAND**



**HS-MM1**

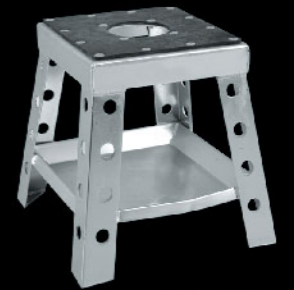
Item NO:	<b>HS-MM1</b>
Material	Alu#6061
Size	37 × 37 × 43cm
Use hight	43cm
Max load	250kg
N.W.	9.45kg
G.W.	10.65kg
Packing	38 × 38 × 111cm
QTY	3PCS/CTN



**HS-MM2**



**HS-MM3**

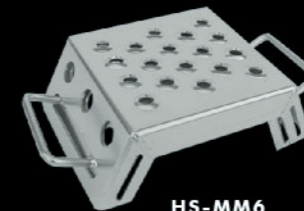


**HS-MM4**

Item NO:	<b>HS-MM2</b>	<b>HS-MM3</b>	<b>HS-MM4</b>
Material	Alu#6061	Alu#6061	Alu#6061
Size	37 × 37 × 43cm	34 × 34 × 34cm	34 × 34 × 34cm
Use hight	43cm	34cm	34cm
Max load	250kg	250kg	250kg
N.W.	9.45kg	8.1kg	8.1kg
G.W.	10.65kg	9.3kg	9.3kg
Packing	38 × 38 × 111cm	36 × 36 × 88cm	36 × 36 × 88cm
QTY	3PCS/CTN	3PCS/CTN	3PCS/CTN



**HS-MM5**



**HS-MM6**



**HS-MM7**

Item NO:	<b>HS-MM5</b>	<b>HS-MM6</b>	<b>HS-MM7</b>
Material	Alu#6061	Alu#6061	Alu#6061
Size	36 × 36 × 41cm	30 × 16 × 12cm	31.5 × 28 × 3cm
Use hight	41cm	16cm	30cm
Max load	250kg	100kg	100kg
N.W.	7.5kg	2.3kg	0.45kg
G.W.	8.7kg	2.5kg	6.4kg
Packing	38 × 38 × 105cm	31 × 22 × 16cm	30 × 33 × 37cm
QTY	3PCS/CTN	1PC/CTN	12PCS/CTN



**CENTER STAND**



**HS-MP1**



**HS-MP2**



**HS-MP3**

Item NO:	HS-MP1	HS-MP2	HS-MP3
Material	Alu#6061	Alu#6061	Alu#6061
Size	37 × 38 × 43cm	37 × 38 × 43cm	37.5 × 36 × 43cm
Use hight	43cm	43cm	43cm
Max load	200kg	200kg	200kg
N.W.	13.88kg	13.4kg	9.6kg
G.W.	15kg	15kg	11kg
Packing	41 × 39 × 98cm	41 × 39 × 98cm	41 × 39 × 94cm
QTY	4PCS/CTN	4PCS/CTN	4PCS/CTN



**HS-MP4**



**HS-MP5**



**HS-MP5-1**



**HS-MP6**

Item NO:	HS-MP4	HS-MP5	HS-MP5-1	HS-MP6
Material	Alu#6061	Alu#6061	Alu#6061	Alu#6061
Size	38 × 38 × 42.5cm	40.5 × 36.5 × 44.5cm	40.5 × 36.5 × 44.5cm	38 × 37 × 42.5cm
Use hight	42.5cm	44.5cm	44.5cm	42.5cm
Max load	200kg	200kg	200kg	200kg
N.W.	9.72kg	14.56kg	14.56kg	11.28kg
G.W.	10.92kg	16kg	16kg	13.14kg
Packing	41 × 39 × 98cm	42 × 38 × 107cm	42 × 38 × 107cm	39 × 39 × 96cm
QTY	4PCS/CTN	4PCS/CTN	4PCS/CTN	4PCS/CTN



HS-MP7



HS-MP8



HS-MP9

Item NO:	HS-MP7	HS-MP8	HS-MP9
Material	Alu#6061	Alu#6061	Alu#6061
Size	41 × 40.5 × 42cm	38 × 37 × 42.5cm	39 × 37.5 × 43cm
Use hight	42cm	42.5cm	43cm
Max load	200kg/440lbs	200kg/440lbs	200kg/440lbs
N.W.	13.9kg	11.28kg	9.6kg
G.W.	15.8kg	13.14kg	10.2kg
Packing	42.5 × 42 × 73.5cm	39 × 39 × 96cm	39 × 39.5 × 94cm
QTY	4PCS/CTN	4PCS/CTN	4PCS/CTN



HS-RS01



HS-RS02

Item NO:	HS-RS01	HS-RS02
Material	Steel Powder Coated	Steel Powder Coated
Size	66.5 × 52 × 35cm	80 × 47 × 40cm
Use hight	35cm	40cm
Max load	250kg/440lbs	200kg/440lbs
N.W.	6.8kg	8.2kg
G.W.	8kg	9.4kg
Packing	59 × 47 × 13cm	59 × 45 × 13cm
QTY	2PCS/CTN	2PCS/CTN



HS-IMP1



HS-IMP2



HS-IMP3

Item NO:	HS-IMP1	HS-IMP2	HS-IMP3
Material	steel with powder coated	steel with powder coated	Alu#6061
Size	36 × 36 × 48.5cm	38 × 38 × 42cm	51.5 × 45 × 41cm
Use hight	48.5cm	42cm	43cm
Max load	200kg/440lbs	200kg/440lbs	200kg/440lbs
N.W.	13.52kg	13.52kg	9.6kg
G.W.	15kg	15kg	10.2kg
Packing	39 × 39 × 106cm	39 × 39 × 79cm	46 × 45.5 × 63cm
QTY	4PCS/CTN	4PCS/CTN	10PCS/CTN



HS-RS03



HS-RS04



HS-RS05

Item NO:	HS-RS03	HS-RS04	HS-RS05
Material	Steel Powder Coated	Steel Powder Coated	Steel Powder Coated
Size	80 × 47 × 40cm	70 × 42.5 × 34cm	80 × 49 × 38cm
Use hight	40cm	34cm	38cm
Max load	250kg/550lbs	200kg/440lbs	200kg/440lbs
N.W.	8kg	7.6kg	7.6kg
G.W.	9.2kg	8.8kg	8.8kg
Packing	59 × 45 × 13cm	59 × 45 × 13cm	59 × 45 × 13cm
QTY	2PCS/CTN	2PCS/CTN	2PCS/CTN



**HS-RS06**

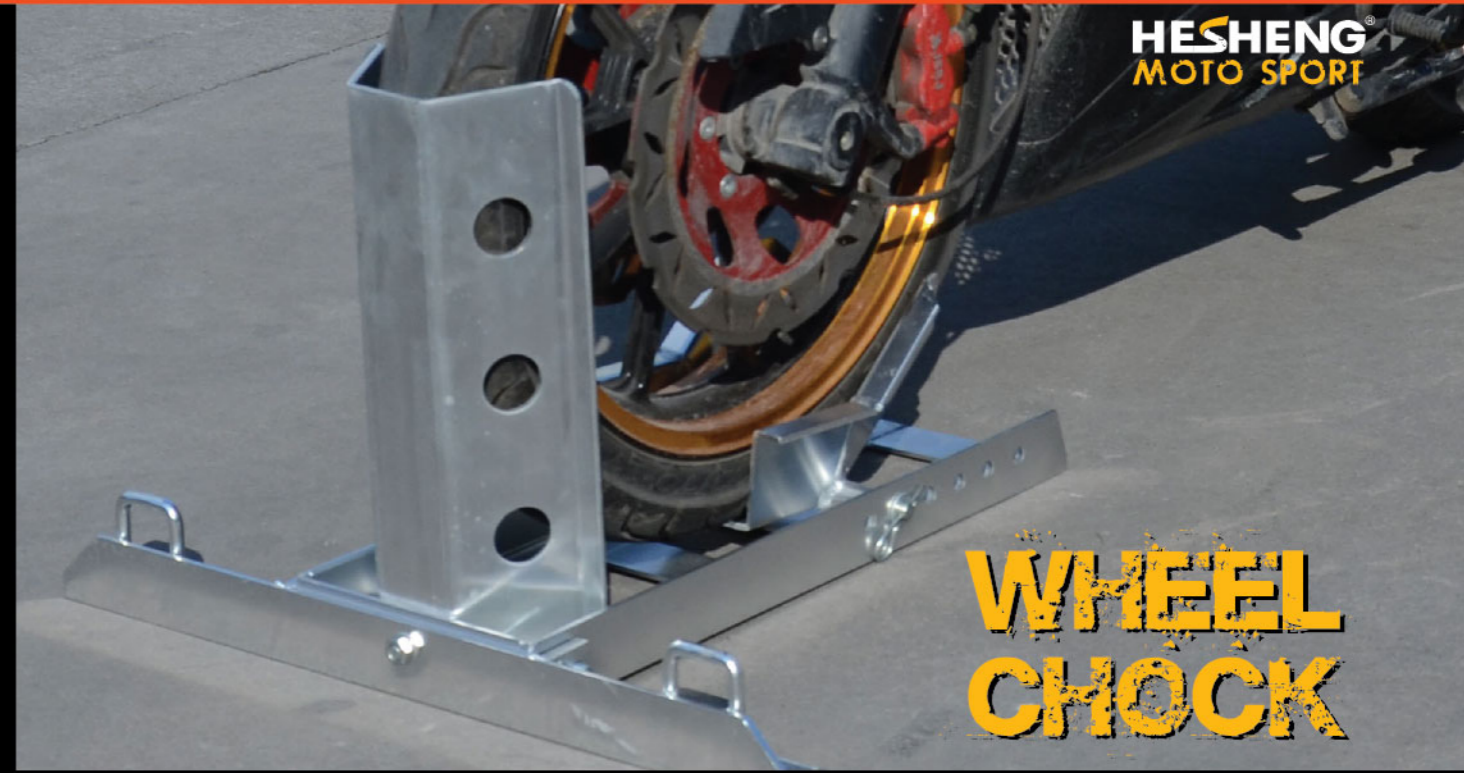


**HS-RS07**



**HS-RS08**

Item NO:	<b>HS-RS06</b>	<b>HS-RS07</b>	<b>HS-RS08</b>
Material	Steel Powder Coated	Steel Powder Coated	Steel Powder Coated
Size	58x43x36cm	81 × 43 × 64cm	78x34x44cm
Use hight	36cm	64cm	44cm
Max load	250kg/550lbs	200kg/440lbs	200kg/440lbs
N.W.	9kg	12kg	13kg
G.W.	10kg	13.2kg	14.5kg
Packing	60x45x38.5cm	59 × 45 × 13cm	79x35x46cm
QTY	2PCS/CTN	2PCS/CTN	2PCS/CTN



**HS-RS09**



**HS-RS10**



**HS-RS11**

Item NO:	<b>HS-RS09</b>	<b>HS-RS10</b>	<b>HS-RS11</b>
Material	Alu#6061	Alu#6061	Alu#6061
Size	54x45x10cm	61x44x10cm	54x26x10cm
Use hight	10cm	10cm	10cm
Max load	250kg/550lbs	280kg/600lbs	450kg/1000lbs
N.W.	9kg	9kg	9kg
G.W.	10kg	10kg	10kg
Packing	56.5x46x11cm	63x46x12cm	56x28x12cm
QTY	1PC/CTN	2PCS/CTN	2PCS/CTN



**HS-WC001**



**HS-WC002**



**HS-WC003**

Item NO:	<b>HS-WC001</b>	<b>HS-WC002</b>	<b>HS-WC003</b>
Material	Steel with powder coated	Alu#6061	Steel with powder coated
Size	60 × 60 × 40cm	60 × 60 × 40cm	46x44x17cm
Suitable Wheel	17Inch	17Inch	17Inch
Max load	250kg/550lbs	200kg/440lbs	200kg/440lbs
N.W.	10.8kg	6.0kg	6kg
G.W.	12kg	7.2kg	7kg
Packing	62 × 27 × 19cm	62 × 27 × 19cm	47x45x19cm
QTY	1PC/CTN	1PC/CTN	1PC /CTN



HS-WC004



HS-WC005



HS-WC006



HS-WC007

Item NO:	HS-WC004	HS-WC005	HS-WC006	HS-WC007
Material	Steel with powder coated	Steel with powder coated	Steel with powder coated	Steel with powder coated
Size	56x48x35cm	63x47x37cm	62x52x14cm	60x25x23cm
Suitable Wheel	16-18Inch	16-18Inch	16-18Inch	15-19Inch
Max load	680kg/1500lbs	680kg/1500lbs	680kg/1500lbs	680kg
N.W.	7.8kg	12.5kg	10.5kg	6kg
G.W.	9kg	13.5kg	11.5kg	7kg
Packing	65x54x16cm	65x54x16cm	64x54x16cm	62x27x25cm
QTY	1PC/CTN	1PC/CTN	1PC/CTN	1PC/CTN



HS-MX1



HS-MX2



HS-MX3

Item NO:	HS-MX1	HS-MX2	HS-MX3
Material	Alu#6061	Alu#6061	Alu#6061
Size	88.5 × 52.5 × 14cm	61 × 39 × 14cm	85 × 46 × 14cm
Use hight	73cm	43cm	77cm
Max load	250kg/550lbs	200kg/440lbs	150kg/330lbs
N.W.	15.2kg	9.6kg	11.6kg
G.W.	16.4kg	10.8kg	12.8kg
Packing	94 × 56.5 × 32.5cm	74 × 44.5 × 47cm	92 × 50 × 29.5cm
QTY	2PCS/CTN	2PCS/CTN	2PCS/CTN



**HS-ML1**



**HS-ML2**

Item NO:	HS-ML1	HS-ML2
Material	Alu#6061	Alu#6061
Size	37 × 37 × 40cm	42 × 42 × 41cm
Use hight	41cm	42cm
Max load	200kg	200kg
N.W.	13kg	14.1kg
G.W.	14kg	15.3kg
Packing	39 × 39 × 98cm	44 × 44 × 98cm
QTY	3PCS/CTN	3PCS/CTN



**HS-ML5**

- Product Deails:
- 1.Lift Capacity: 180Kgs/400LBS.
  - 2.Hydraulics: 1Ton ram.
  - 3.Max Height:90cm/35Inches.
  - 4.Min Height:42cm/17Inches.

**Racing Alloy Scissor Lift**

- Light Weight Alloy Construction,only 25.8Kgs.
- Automatic Safety Latch with Manual Release.
- Heavy-duty Aluminum top with oil drain hole
- Rivet less, molded gas-resistant rubber top Pad
- Quick - connect dual footpad control.
- Can be raised or lowered from either side.
- Spring-tension hooks to secure bike to stand.
- Designed specifically for motocross racing.



**HS-ML3**



**HS-ML4**



**HS-IL1**

Item NO:	HS-ML3	HS-ML4	HS-IL1
Material	Alu#6061	Alu#6061	steel
Size	39 × 39 × 33cm	34 × 34 × 34cm	34 × 34 × 34cm
Use hight	40cm	34cm	34cm
Max load	200kg	250kg	250kg
N.W.	11kg	4.2kg	16.8kg
G.W.	12.2kg	5.02kg	18kg
Packing	41 × 41 × 99cm	56 × 39 × 33cm	36 × 36 × 88cm
QTY	3PCS/CTN	1PC/CTN	3PCS/CTN



**HS-IL2**



**HS-IL3**



**HS-IL4**

Item NO:	HS-IL2	HS-IL3	HS-IL4
Material	steel	steel	steel
Size	35 × 30 × 38cm	40.5 × 48 × 28cm	27 × 33 × 30cm
Use hight	45cm	39cm	45cm
Max load	250kg	250kg	250kg
N.W.	12.6kg	20.7kg	21kg
G.W.	13.8kg	21.9kg	22.2kg
Packing	36 × 36 × 88cm	42 × 38.5 × 33.5cm	42 × 38.5 × 33.5cm
QTY	3PCS/CTN	3PCS/CTN	3PCS/CTN



Ramp



**HS-MR1**      **HS-MR2**      **HS-MR3**      **HS-MR4**      **HS-MR5**

Item NO:	HS-MR1	HS-MR2	HS-MR3	HS-MR4	HS-MR5
Material	Alu# 6061	Alu# 6061	Alu# 6061	Alu# 6061	steel
Size	117 × 16 × 9cm	101 × 19 × 10cm	110 × 24 × 7cm	183 × 16 × 10cm	160 × 22 × 5cm
Use length	230cm	198cm	198cm	183cm	160cm
Max load	180kg	180kg	180kg	180kg	250kg
N.W.	7.1kg	4.75kg	4.8kg	3.8kg	6.5kg
G.W.	8.3kg	10.7kg	10.8kg	24.3kg	7.7kg
Packing	118 × 18 × 11cm	103 × 21 × 22cm	112 × 26 × 16cm	201 × 20 × 18cm	162 × 22.5 × 6cm
QTY	1PC/CTN	2PCS/CTN	2PCS/CTN	6PCS/CTN	1PC/CTN



**HS-MR6**      **HS-MR7**      **HS-MR8**      **HS-MR9**      **HS-MR10**

Item NO:	HS-MR6	HS-MR7	HS-MR8	HS-MR9	HS-MR10
Material	Alu# 6061	Alu# 6061	Alu# 6061	Alu# 6061	Alu# 6061
Size	175 × 75 × 4.5cm	175 × 112 × 4.5cm	114x28.5x15cm	94 × 30 × 15cm	120 × 26.5 × 13cm
Use height	175cm	175cm	114cm	94cm	120cm
Max load	200kg	250kg	300kg	200kg	5.24kg
N.W.	6.7kg	10.2kg	7.2kg	7kg	5.24kg
G.W.	27.3kg	32.1kg	8kg	8kg	10.48kg
Packing	177 × 39 × 20cm	177 × 39 × 15cm	116x30x15cm	96 × 31.5 × 16cm	121.5 × 28 × 14cm
QTY	4PCS/CTN	3PCS/CTN	1PC/CTN	1PC/CTN	2PCS/CTN

Tire Changer&Balancer



**HS-TC01**

Motorcycle Tire Changer	Motorcycle Wheel Balance
Base Size: 19"-21"	Overall Dimensions:
Suitable for Tires: 13"-19"	7-7/8" L x 15-5/8" W x 17" H
N.W.: 6.5kg	14-3/4" side supports
G.W.: 7.0kg	1-1/2" steel rollers
Packing Size: 52x52x7.5cm	1-1/2" L wheel collar length
	Shipping Weight: 11.80 lbs



**HS-WB01**



**HS-TC02**

Motorcycle Tire Changer	Motorcycle Tire Changer
Base Size: 19"-21"	Base Size: 19"-21"
Suitable for Tires: 13"-19"	Suitable for Tires: More than 10"
N.W.: 6.5kg	N.W.: 6.5kg
G.W.: 7.0kg	G.W.: 7.0kg
Packing Size: 52x52x7.5cm	Packing Size: 52x52x7.5cm



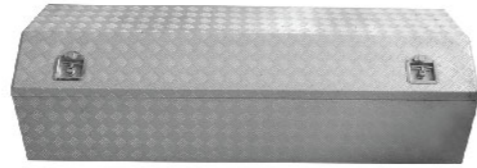
**HS-TC03**

Tool Box

Garage Accessory



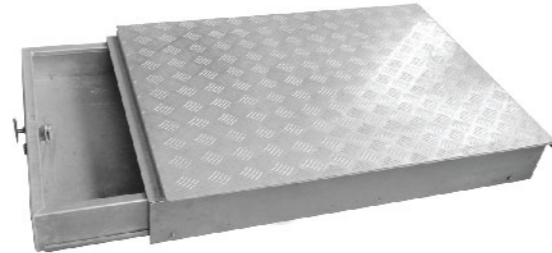
HS-TB01



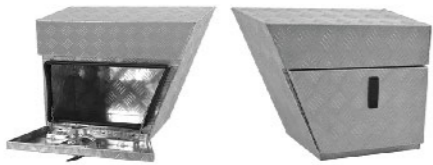
HS-TB02



HS-TB03



HS-TB04



HS-TB05



HS-TB06



HS-TB07



HS-TB08



HS-RT01



HS-RT02



3 Star Work



Cabinet



Double Pass Holder



Multi Shelf



Folding Table



Towel Holder



Light holder



Universal securit tracks



Mag Rack



Inset wheel



Drink holder



Shose hanger



Strap Hanger



Front Bumper